

Process Mining

Mgr. Michal Rosík
(Minit j.s.a., michal.rosik@minit.io)

Seminar on Data mining tools and CAQ (S1)

Vysoká škola manažmentu v Trenčíne
International Workshop on Knowledge Management
IWKM'2017

Trenčín 12 - 13. 10. 2017

BIG DATA

PROCESS REVOLUTION STARTS
IN BIG DATA UNDERGROUND



BIG DATA



BIG DATA

Eventlog



A photograph of an industrial refinery or chemical plant at night. The scene is illuminated by numerous bright lights, creating a high-contrast environment. In the foreground, several large, dark pipes run horizontally across the frame. In the background, there are tall distillation columns, storage tanks, and other complex structures. A person in a hard hat is visible on a walkway in the middle ground. The sky is dark blue, suggesting twilight or early night.

Data entries

(enterprise database data in cloud or on premises)

System logs

(in form of documents, click streams, XML data)

Center1;35;CLOSED;39.4;Abeokuta;Enim Nec Tempus LLP;Algeria 956478;Approving on specific level;2014-10-23T10:25:27;2014-10-23T11:11:30;2;Completed ;Completed ;Azalia Hansen
78;Approving on specific level;2014-10-23T11:11:32;2014-10-23T13:16:32;2;Completed ;Completed ;Cullen Cameron;Approved;Completed ;CostCenter2;37;CLOSED;2270.28;Pont-de-Loup;
2014-10-23T13:16:40;2014-10-23T13:24:47;2;Completed ;Completed ;Edan Carrillo;Approved;Completed ;CostCenter2;37;CLOSED;2270.28;Pont-de-Loup;Augue Porttitor Limited;Algeria
en;OrderProcessed;Completed ;CostCenter2;37;CLOSED;2270.28;Pont-de-Loup;Augue Porttitor Limited;Algeria 956478;Delivery confirmation;2014-10-23T13:57:56;2014-11-11T13:01:5
Center2;37;CLOSED;2270.28;Pont-de-Loup;Augue Porttitor Limited;Algeria 956478;Delivery confirmation;2014-11-11T13:01:58;2014-11-20T14:26:17;2;Completed ;Completed ;Azalia Han
ed;Algeria 956481;Approving on specific level;2014-10-23T10:28:38;2014-10-23T11:12:28;2;Completed ;Completed ;Azalia Hansen;Approved;Completed ;CostCenter2;37;CLOSED;1908.
-10-23T11:12:30;2014-10-23T13:17:24;2;Completed ;Completed ;Check order numbers;Completed ;Cost Center2;37;CLOSED;1908.48;Pont-de-Loup;Augue Porttitor Limited;Algeria 956
Carrillo;Approved;Completed ;CostCenter2;37;CLOSED;1908.48;Pont-de-Loup;Augue Porttitor Limited;Algeria 956481;Process order;2014-10-23T13:25:26;2014-10-23T13:58:26;2;Comp
Center2;37;CLOSED;1908.48;Pont-de-Loup;Augue Porttitor Limited;Algeria 956481;Delivery confirmation;2014-10-23T13:58:28;2014-11-11T13:03:39;2;Completed ;Completed ;Azalia Han
ed;Algeria 956481;Delivery confirmation;2014-11-11T13:03:40;2014-11-26T12:51:30;2;Completed ;Completed ;Azalia Hansen;DeliveredCompletely;Completed ;CostCenter2;Process ord
2014-10-23T10:36:27;2014-10-23T11:13:19;2;Completed ;Completed ;Azalia Hansen;Approved;Completed ;CostCenter2;37;CLOSED;769.92;Pont-de-Loup;Augue Porttitor Limited;Algeria
pleted ;Cullen Cameron;Approved;Completed ;CostCenter2;37;CLOSED;769.92;Pont-de-Loup;Augue Porttitor Limited;Algeria 956483;Process order;2014-10-23T13:18:43;2014-10-23T1
Center2;37;CLOSED;769.92;Pont-de-Loup;Augue Porttitor Limited;Algeria 956483;Delivery confirmation;2014-10-23T13:54:46;2014-11-25T07:18:07;2;Completed ;Completed ;Azalia Han
84;Approving on specific level;2014-10-23T10:44:54;2014-10-23T11:14:47;2;Completed ;Completed ;Azalia Hansen;Approved;Completed ;CostCenter2;37;CLOSED;7622.04;Beerse;Lacus
2014-10-23T11:14:49;2014-10-23T13:19:18;2;Compare of sums;Cullen Cameron;Approved;Completed ;CostCenter2;37;CLOSED;7622.04;Beerse;Lacus Foundation;Algeria 956484;Approv
lo;Approved;Completed ;CostCenter2;37;CLOSED;7622.04;Beerse;Lacus Foundation;Algeria 956484;Process;2014-10-23T13:25:51;Get lowest approval level;2014-10-23T13:59:06;2;Comp
Center2;37;CLOSED;7622.04;Beerse;Lacus Foundation;Algeria 956484;Delivery confirmation;2014-10-23T13:59:08;2014-11-18T09:09:01;2;Completed ;Completed ;Azalia Hansen;Deliver
85;Approving on specific level;2014-10-23T10:48:30;2014-10-23T11:15:35;2;Completed ;Completed ;Azalia Hansen;Approved;Completed ;CostCenter2;37;CLOSED;8990.8;Beerse;Lacus F
2014-10-23T11:15:38;2014-10-23T13:19:34;2;Completed ;Completed ;Cullen Cameron;Approved;Completed ;CostCenter2;37;CLOSED;8990.8;Beerse;Lacus Foundation;Algeria 956485;A
lo;Approved;Completed ;CostCenter2;37;CLOSED;8990.8;Beerse;Lacus Foundation;Algeria 956485;Process order;2014-10-23T13:26:02;2014-10-23T14:00:16;2;Completed ;Completed ;A
dation;Algeria 956485;Delivery confirmation;2014-10-23T14:00:17;2014-11-18T09:10:15;2;Completed ;Completed ;Azalia Hansen;DeliveredCompletely;Completed ;CostCenter2;37;CLO
2014-10-23T10:50:02;2014-10-23T11:1;Azalia Hansen;Approved;Completed ;CostCenter2;37;CLOSED;3401.46;Beerse;Lacus Foundation;Algeria 956486;Approving on specific level;2014
Center2;37;CLOSED;3401.46;Beerse;Lacus Foundation;Algeria 956486;Approving on specific level;Approving on specific level;2014-10-23T13:19:55;2014-10-23T13:26:07;2;Completed ;C
dation;Algeria 956486;Process order;2014-10-23T13:26:11;2014-10-23T14:01:35;2;Completed ;Completed ;Azalia Hansen;Order;Approving on specific level;Processed;Completed ;CostC
rmation;2014-10-23T14:01:36;2014-11-25T07:16:48;2;Completed ;Completed ;Azalia Hansen;DeliveredCompletely;Completed ;CostCenter2;37;CLOSED;3401.46;Beerse;Lacus Foundatio
pleted ;Azalia Hansen;Approved;Completed ;CostCenter2;37;CLOSED;2131.48;Beerse;Lacus Foundation;Algeria956488;Approving on specific level;2014-10-23T11:16:56;2014-10-23T13
Center2;37;CLOSED;2131.48;Beerse;Lacus Foun;Shift to higher level;dation;Algeria956488;Approving on specific level;2014-10-23T13:20:36;2014-10-23T13:26:16;2;Completed ;Completo
dation;Algeria956488;Process order;2014-10-23T13:26:19;2014-10-23T14:03:29;2;Completed ;Completed ;Azalia Hansen;OrderProcessed;Completed ;CostCenter2;37;CLOSED;2131.48;B
rmation;2014-10-23T14:03:31;2014-11-25T07:18:55;2;Completed ;Completed ;Azalia Hansen;DeliveredPartially;Completed ;Status change to Approved;37;CLOSED;2131.48;Beerse;Lacus
rmation;2014-11-25T07:19:00;2014-12-02T16:18:45;2;Completed56481;Approving on specific level;2014-10-23T10:28:38;2014-10-23T11:12:28;2;Completed ;Completed ;Azalia Hansen
81;Approving on specificevel; 2014-10-23T11:12:30;2014-10-23T13:17:24;2;Completed ;Completed ;Cullen Cameron;Appro ved;Completed ;Cost Center2;37;CLOSED;1908.48;Pont-de-L
2014-10-23T13:17:27;2014-10-23T13:25:22;2;Completed ;Completed ;Edan Carrillo;Approved;Completed ;CostCenter2;37;CLStatus change to Accounted;OSED;1908.48;Pont-de-Loup;A
unted;2;Completed ;Completed ;Azalia Hansen;OrderProcessed;Completed ;CostCenter2;37;CLOSED;1908.48;Pont-de-Loup;Augue Porttitor Limited;Algeria 956481;Delivery confirmatio
en;DeliveredPartially;Completed ;CostCenter2;37;CLOSED;1908.48;Pont-de-Loup;Augue Porttitor Limited;Algeria 956481;Delivery confirmation;2014-11-11T13:03:40;2014-11-26T12:51:
Center2;37;CLOSED;1908.48;Pont-de-Loup;Augue Porttitor Limited;Algeria 956483;Approving on specific level;2014-10-23T10:36:27;2014-10-23T11:13:19;2;Completed ;Completed ;Aza
ed;Algeria 956483;Approving on specific level;2014-10-23T11:13:21;2014-10-23T13:18:39;2;Completed ;Completed ;Cullen Cameron;Approved;Completed ;CostCenter2;37;CLOSED;769.
;2014-10-23T13:18:43;2014-10-23T13:54:44;2;Completed ;Completed ;Azalia Hansen;OrderProcessed;Completed ;CostCenter2;37;CLOSED;769.92;Pont-de-Loup;Augue Porttitor Limited
pleted ;Azalia Hansen;Completed ;CostCenter2;37;CLOSED;769.92;Pont-de-Loup;Augue Porttitor Limited;Algeria 956484;Approving on specific level;2014-10-23T10:44:54;2014-10-23



795

Check order numbers

1107

Compare of sums

267

Get lowest approval level

951

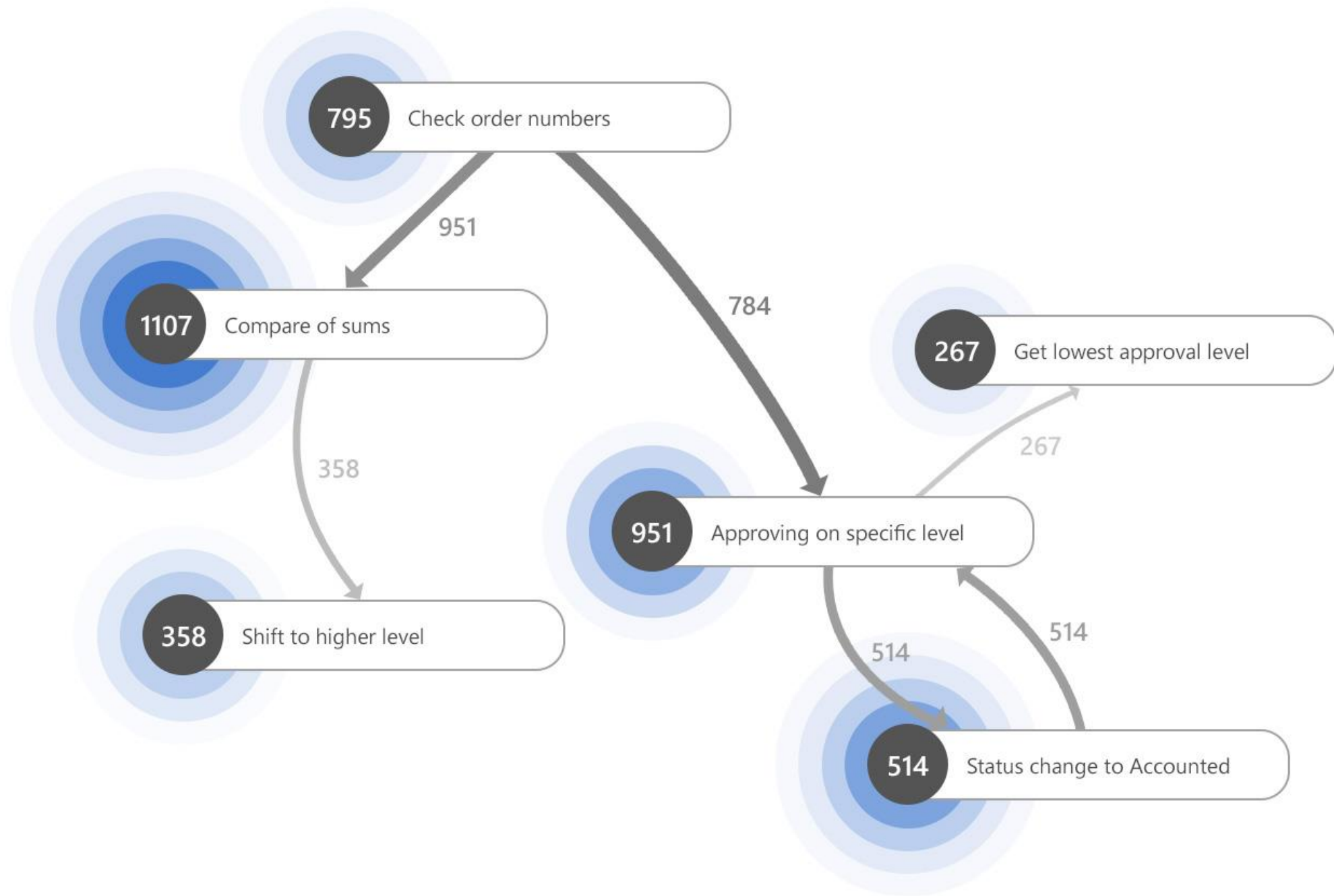
Approving on specific level

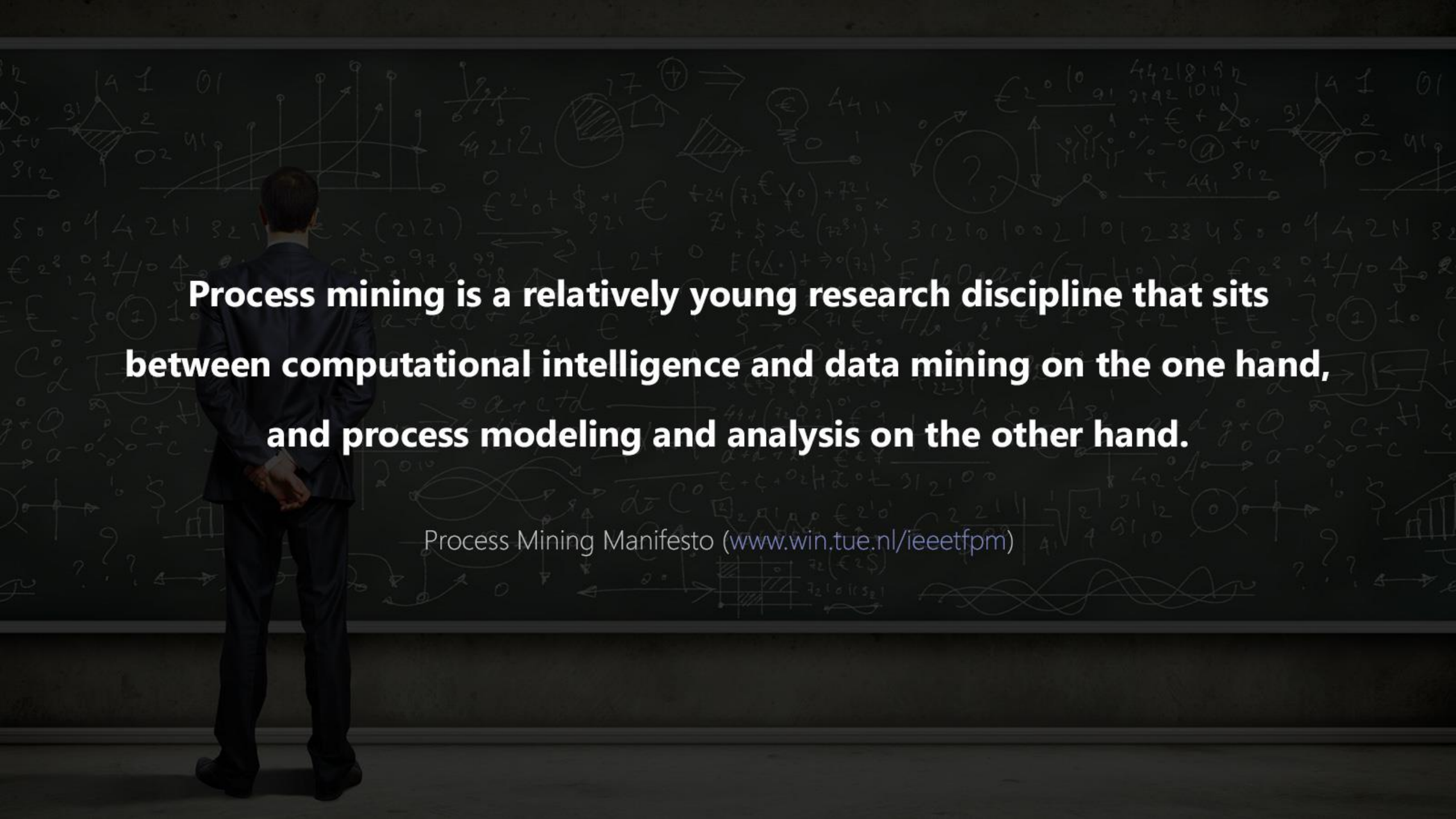
358

Shift to higher level

514

Status change to Accounted





Process mining is a relatively young research discipline that sits between computational intelligence and data mining on the one hand, and process modeling and analysis on the other hand.

Process Mining Manifesto (www.win.tue.nl/ieeetfpm)

PROCESS REVOLUTION



subjective 

adjective | sub·jec·tive | \(\,)səb-'jek-tiv\

relating to the way a person experiences things in his or her own mind



limited 

adjective | lim·it·ed | \'li-mə-təd\

confined within limits : restricted <limited success>



exception 

noun | ex·cep·tion | \ik-'sep-shən\

a case where a rule does not apply



visibility 

noun | vis·i·bil·i·ty | \,vi-zə-'bi-lə-tē\

capability of being readily noticed

minut



VSM (City University)

Personalized University

Analytical Results

- Comparing A & B grade students to E graders
- 7 activities revealed in their flow
- Rising activity by 50% and redistributing in time

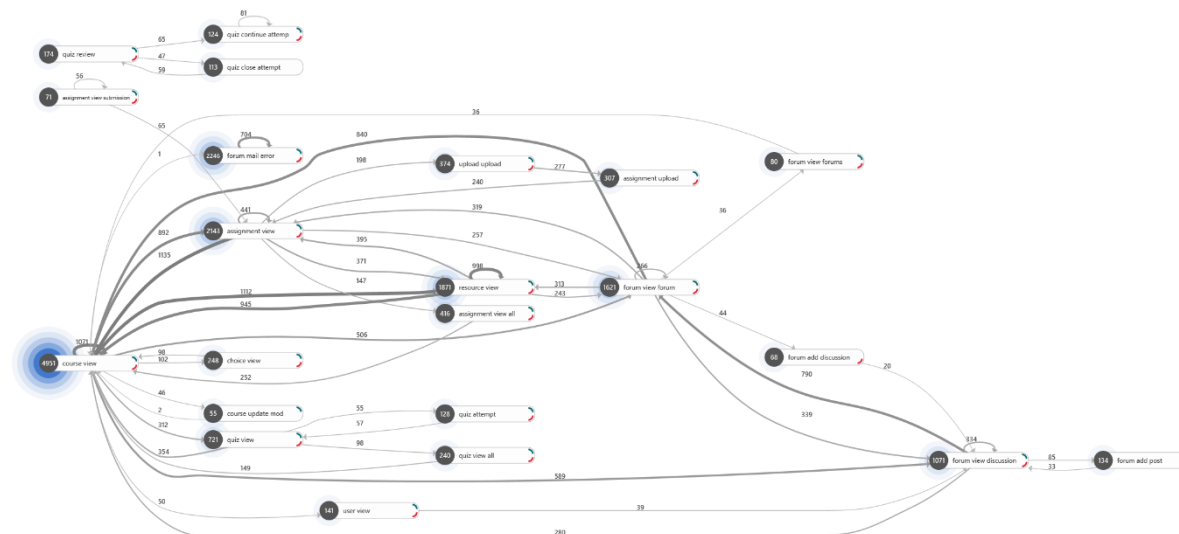
Outcome

- Easier student onboarding
- Best practice guide

Phase 1 – Overview

Low height flight over moodle data

Results



Info ▾

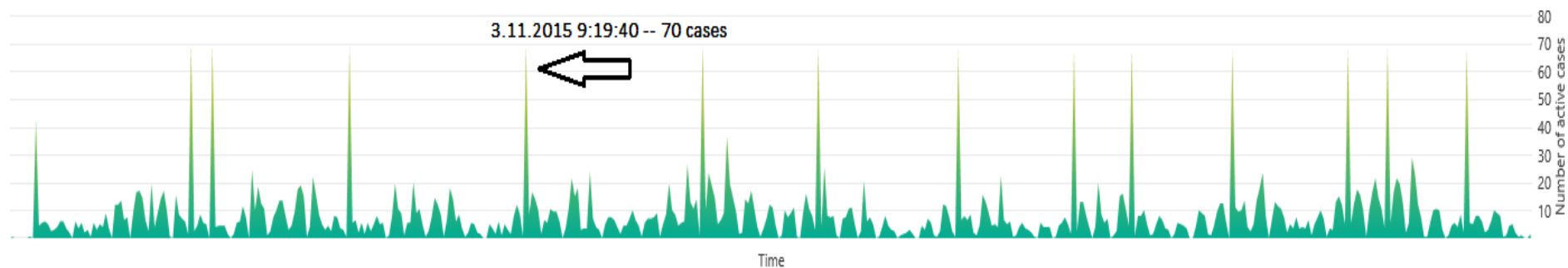


2. ZADANIE	175	70%
AKTIVITA 2 (denní studenti)	48	19%
1. ZADANIE	24	10%
AKTIVITA 1 (denní studenti)	4	2%

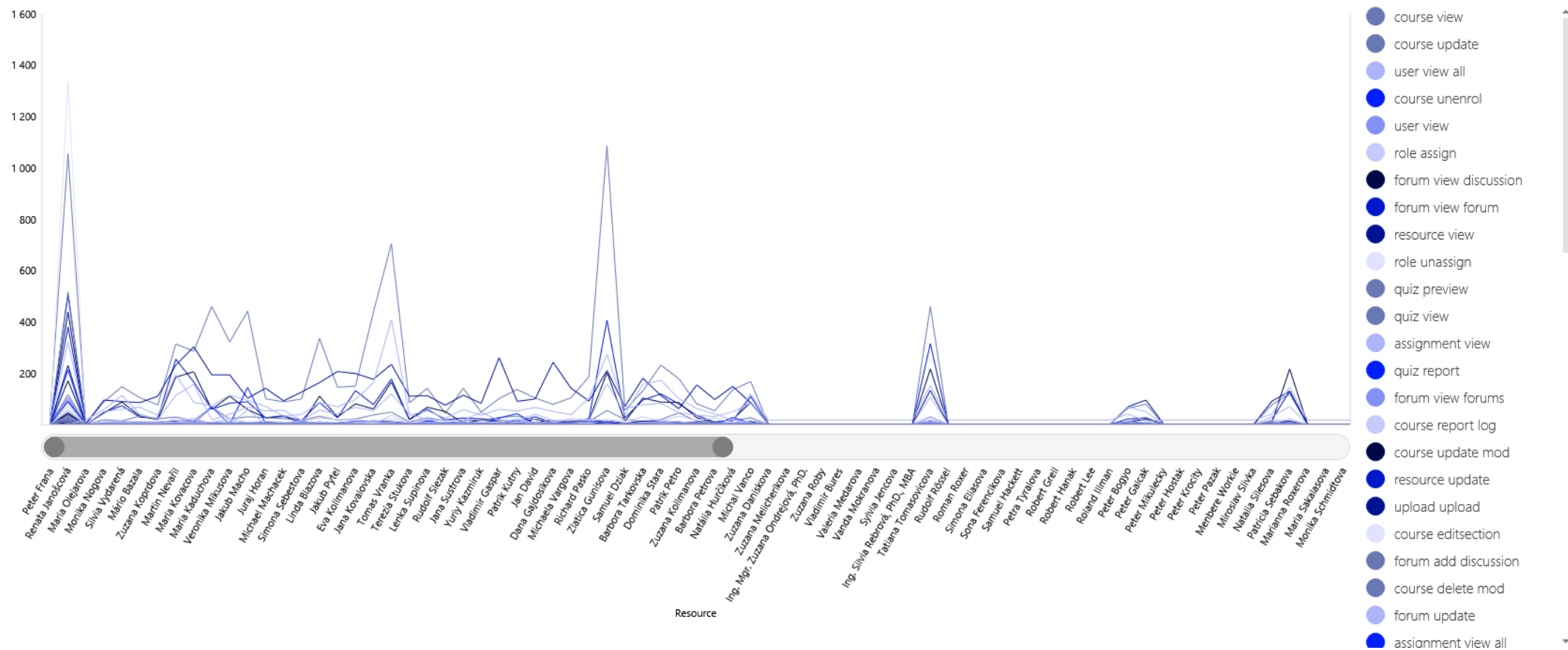
Info ▾



PRÍKLAD č.1	34	17%
PRÍKLAD č.2	30	15%
V 4. týždni NEZABUDNITE! - v utorok - uč	23	11%
Príklad 2	20	10%
Príklad 1	18	9%
PRÍKLAD č.3	11	5%



Results



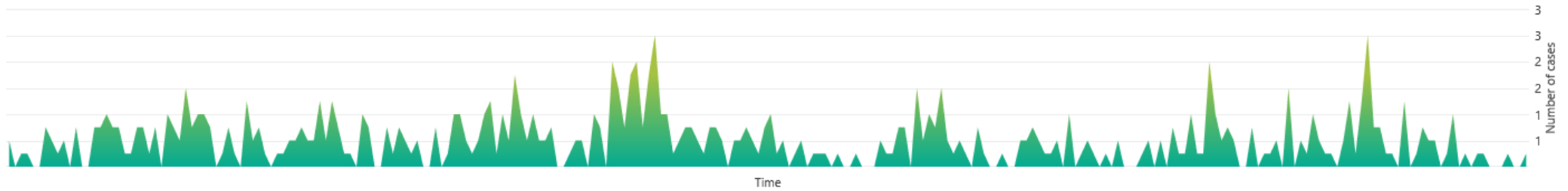
Questions

- Can we focus on a specific study field?
- Are we able to enrich the data with final grades and thus distinguish students?
- Are we able to distinguish the process variants and habits of best performers?
- And what about comparisons to low performers?
- Would it be possible to learn from the best and guide newcomers to achieve better final grades?

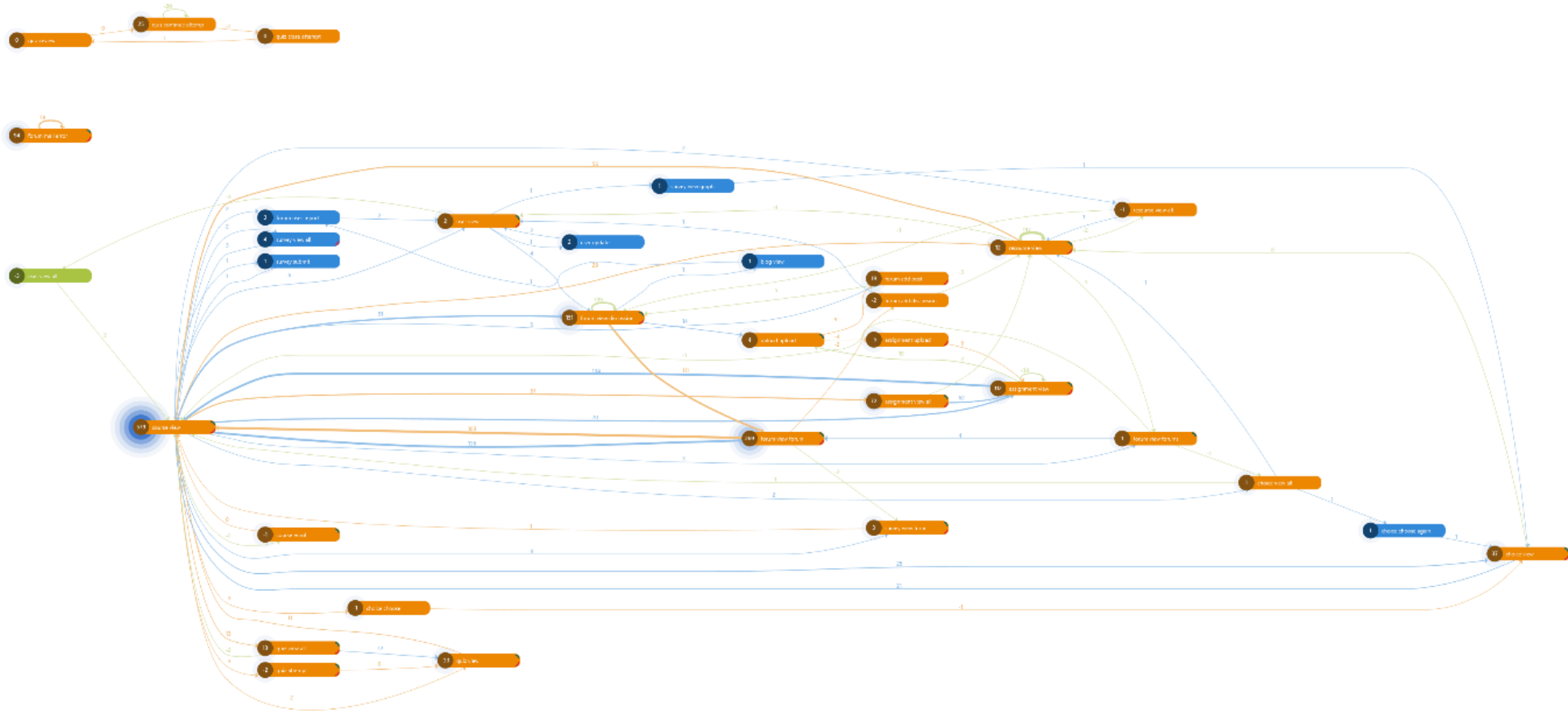
Phase 2 – Deep Insight

Drill-down into online study field based on focused questions

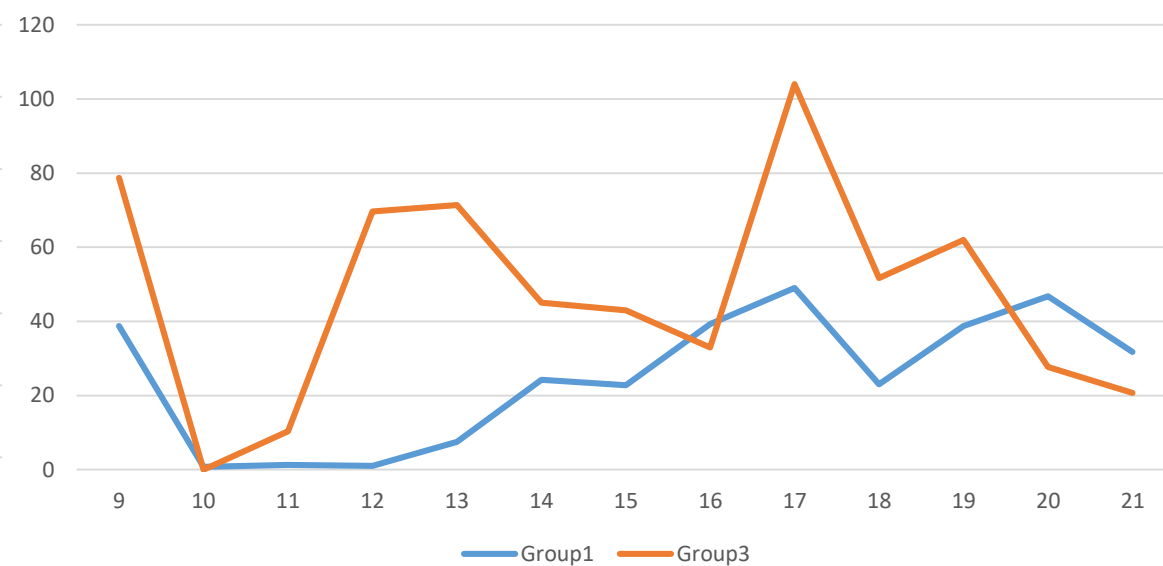
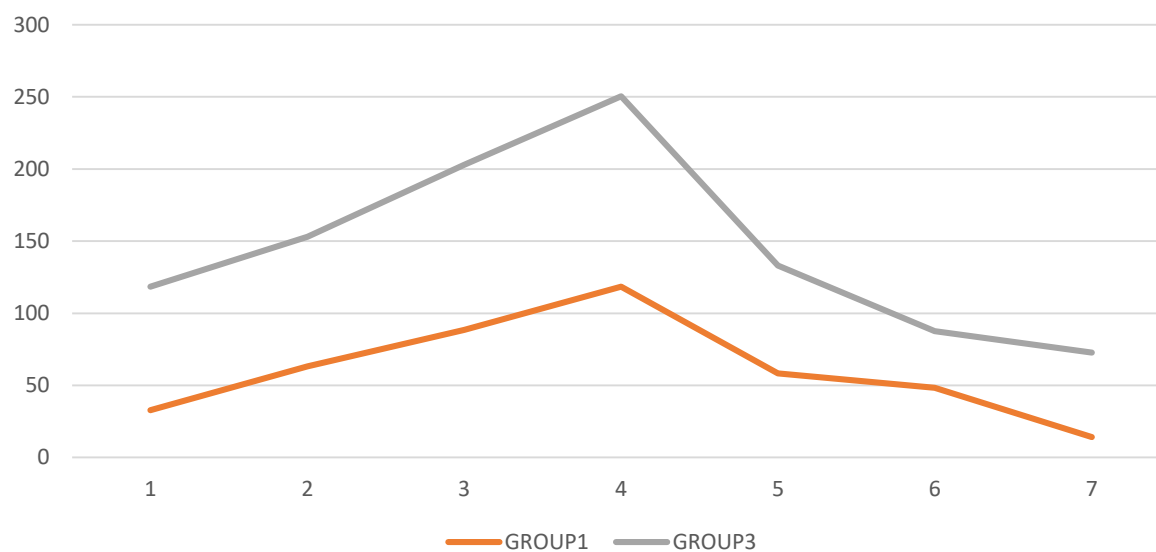
Activity comparison



Process comparison



Activity distribution comparison



THANK YOU



Michal Rosik

PRODUCT VISIONARY

As Product Visionary for minit, Michal defines the Research & Development direction for this process mining solution, develops close ties to the academic community in this area and evangelises process mining benefits to enterprises worldwide. Michal previously lead Microsoft Consulting department in Siemens and was involved in several large enterprise projects as a consultant and project manager. In his free time, he is a passionate trail runner.

 @michalrosik

 @minitlabs

 michal.rosik@minit.io